

**think
safe.**

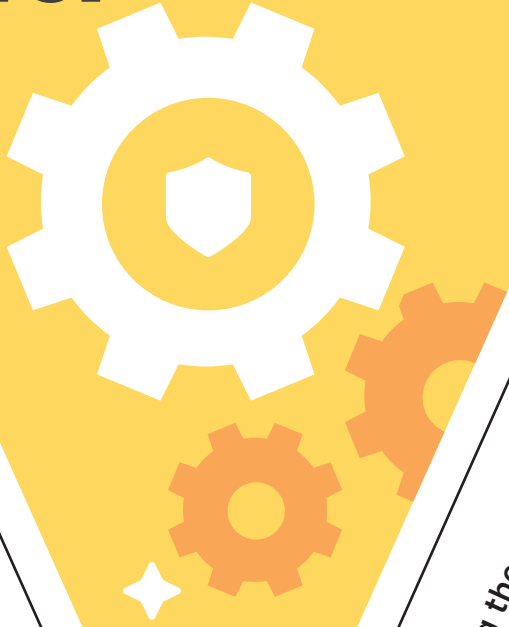


1. Cut along the outside edge
2. Score along the dotted line and fold and tape over string or twine

**national safe
work month**



**work
safe.**



1. Cut along the outside edge
2. Score along the dotted line and fold and tape over string or twine

**national safe
work month**



**be
safe.**



1. Cut along the outside edge
2. Score along the dotted line and fold and tape over string or twine

**national safe
work month**

